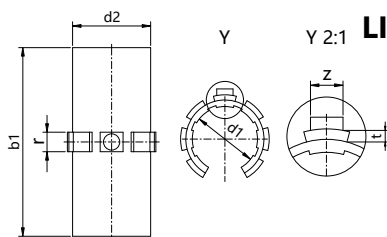



LIN 直线滑动膜

开口式，长型设计



 产品代码

LIN-01K-10

直径
标准型开口式

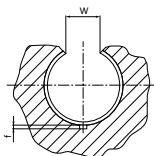
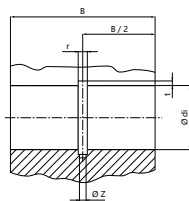
● 适用于支撑轴

尺寸 [mm]

产品代码	d1	公差	d2	b1	r	t	z	重量 [g]
LIN-01K-10	10	+0.030 +0.070	12	28	3	0.8	2.5	1.10
LIN-01K-12	12	+0.030 +0.070	14	31	3	0.8	3	1.50
LIN-01K-16	16	+0.030 +0.070	18	35	3.5	0.8	3.5	2.20
LIN-01K-20	20	+0.030 +0.070	23	44	5	0.8	3.5	4.90
LIN-01K-25	25	+0.030 +0.070	28	57	5	0.8	4	8.23
LIN-01K-30	30	+0.040 +0.085	34	67	5	0.8	4	14.95
LIN-01K-40	40	+0.040 +0.085	44	79	6	1.3	5	23.16
LIN-01K-50	50	+0.050 +0.100	55	99	7	1.3	6	45.35

装配图 适用于滑动膜 LIN-01 的基座孔 尺寸 [mm]

产品代码	轴 ∅	d1 H7	B h10	W +0.2	r +0.05	t +0.1	f +0.5	z +0.2
LIN-01K-10	10	12	29	7.3	3	1	1	2.6
LIN-01K-12	12	14	32	9	3	1	1.5	3.1
LIN-01K-16	16	18	36	11.6	3.5	1	1.7	3.6
LIN-01K-20	20	23	45	12	5	1	2	3.6
LIN-01K-25	25	28	58	14.5	5	1	2	4.1
LIN-01K-30	35	39	70	16.6	5	1	2	4.1
LIN-01K-40	40	44	80	21	6	1.5	2.5	5.1
LIN-01K-50	50	55	100	25.5	7	1.5	2.5	6.1



可配合:



LIN-01RK
LIN-03RK



LIN-06RK