
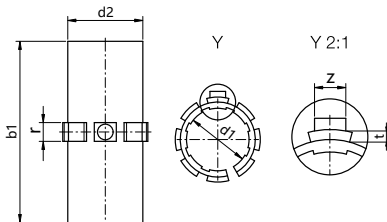


LIN 直线滑动膜

封闭式，长型设计

 产品代码



LIN-01-10

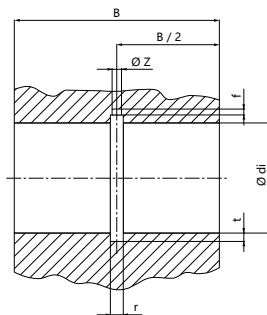
 直径
标准型

尺寸 [mm]

产品代码	d1	公差	d2	b1	r	t	z	F 最大值	F 最大值	重量
								动态 P=5MPa[N]	静态 P=35MPa[N]	
LIN-01-10	10	+0.030+0.070	12	28	3	0.8	2.5	725	5,075	1.10
LIN-01-12	12	+0.030+0.070	14	31	3	0.8	3	960	6,720	1.50
LIN-01-16	16	+0.030+0.070	18	35	3.5	0.8	3.5	1,440	10,080	2.20
LIN-01-20	20	+0.030+0.070	23	44	5	0.8	3.5	2,250	15,750	4.90
LIN-01-25	25	+0.030+0.070	28	57	5	0.8	4	3,625	25,375	8.23
LIN-01-30	30	+0.040+0.085	34	67	5	0.8	4	5,100	35,700	14.95
LIN-01-35	35	+0.040+0.085	39	69	5	0.8	4	7,300	51,000	18.20
LIN-01-40	40	+0.040+0.085	44	79	6	1.3	5	8,000	56,000	23.16
LIN-01-50	50	+0.050+0.100	55	99	7	1.3	6	12,500	87,500	45.35

装配图 适用于滑动膜 LIN-01 的基座孔 尺寸 [mm]

产品代码	轴 ∅	di	B	r	t	f	z
		H7	h10				
LIN-01-10	10	12	29	3.0	1.0	1.0	2.6
LIN-01-12	12	14	32	3.0	1.0	1.5	3.1
LIN-01-16	16	18	36	3.5	1.0	1.7	3.6
LIN-01-20	20	23	45	5.0	1.0	2.0	3.6
LIN-01-25	25	28	58	5.0	1.0	2.0	4.1
LIN-01-30	30	34	68	5.0	1.0	2.0	4.1
LIN-01-35	35	39	70	5.0	1.0	2.0	4.1
LIN-01-40	40	44	80	6.0	1.5	2.5	5.1
LIN-01-50	50	55	100	7.0	1.5	2.5	6.1



可配合:



LIN-01R
LIN-03R



LIN-06R



LIN-01RF/LIN-01RT/
LIN-02RFL/LIN-02RTL