
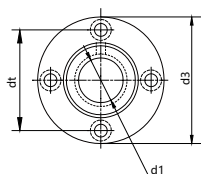
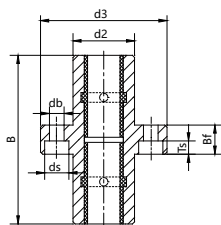


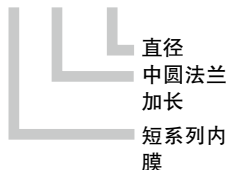
LIN 中法兰型轴承座

阳极氧化铝合金外壳 中圆法兰型，串联式

 产品代码



LIN-02RFM-10



- 配备 2 个 LIN-02 滑动膜来增加导向长度
- 根据客户要求可以提供非标制作

技术参数 座孔: H7 轴: h6-h9

产品代码	轴 ∅ [mm]	座孔 H7 [mm]	公差 轴承内圈直径 [mm]	F 最大值	F 最大值	重量 [g]
				动态 P=5MPa [N]	静态 P=35MPa [N]	
LIN-02RFM-10	10	19	+0.030 +0.083	1,300	9,100	44
LIN-02RFM-12	12	22	+0.030 +0.083	1,680	11,760	57
LIN-02RFM-16	16	26	+0.030 +0.083	2,400	16,800	79
LIN-02RFM-20	20	32	+0.030 +0.091	3,000	21,000	128
LIN-02RFM-25	25	40	+0.040 +0.091	5,000	35,000	249
LIN-02RFM-30	30	47	+0.040 +0.110	7,500	52,500	388
LIN-02RFM-40	40	62	+0.040 +0.115	12,000	84,000	835
LIN-02RFM-50	50	75	+0.030 +0.130	17,500	122,500	1,352

尺寸 [mm]

产品代码	d1	d2 h7	d3	dt	B	Bf	ts	db	ds
LIN-02RFM-10	10	19	39	29	52	9	4.1	4.5	7.5
LIN-02RFM-12	12	22	42	32	57	9	4.1	4.5	7.5
LIN-02RFM-16	16	26	46	36	70	9	4.1	4.5	7.5
LIN-02RFM-20	20	32	54	43	80	11	5.1	5.5	9
LIN-02RFM-25	25	40	62	51	112	11	5.1	5.5	9
LIN-02RFM-30	30	47	76	62	123	14	6.1	6.6	11
LIN-02RFM-40	40	62	98	80	151	18	8.1	9	14
LIN-02RFM-50	50	75	112	94	192	18	8.1	9	14