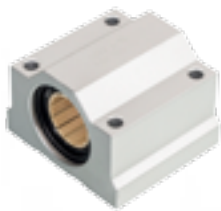


# LIN 通用直线轴承座

## 标准直线轴承座



产品代码



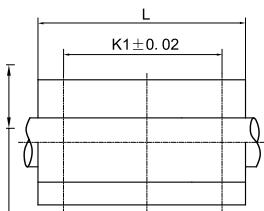
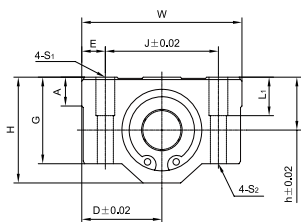
## LIN-01G-12



轴承内径

直线轴承座

LIN-01R 系列直线轴承



轴 Shaft: h6-h9

产品代码	自调心	全塑料	轴径	尺寸 [mm <sup>2</sup> ]												
可选装标准型	可选装调心型	可选装全塑料		[mm <sup>2</sup> ]	h	D	W	H	G	A	J	E	S <sub>1</sub> × L <sub>1</sub>	S <sub>2</sub>	K	L
LIN-01R	LIN-03R	LIN-00														
LIN-01G-12	LIN-03G-12	LIN-00G-12	φ12	15	22	44	30	24	8	33	5.5	M5 × 10	φ4.3	26	39	
LIN-01G-16	LIN-03G-16	LIN-00G-16	φ16	19	25	50	38.5	32.5	9	36	7	M5 × 12	φ4.3	34	44	
LIN-01G-20	LIN-03G-20	LIN-00G-20	φ20	21	27	54	41	35	11	40	7	M6 × 12	φ5.2	40	53	
LIN-01G-25	LIN-03G-25	LIN-00G-25	φ25	26	38	76	51.5	41	12	54	11	M8 × 18	φ7	50	67	
LIN-01G-30	LIN-03G-30	LIN-00G-30	φ30	30	39	78	59.5	49	15	58	10	M8 × 18	φ7	58	76	
LIN-01G-40	LIN-03G-40	LIN-00G-40	φ40	40	51	102	78	62	20	80	11	M10 × 25	φ8.7	60	90	
LIN-01G-50	LIN-03G-50	LIN-00G-50	φ50	52	61	122	102	80	25	100	11	M10 × 25	φ8.7	80	110	

产品代码	内径	公差	极限动载荷	极限静载荷	重量
标准型	[mm <sup>2</sup> ]	[mm <sup>2</sup> ]	P=5MPa[N]	P=35MPa[N]	[g]
LIN-01G-12	12	+0.030/+0.088	1152N	8064N	79
LIN-01G-16	16	+0.030/+0.088	1728N	12096N	125
LIN-01G-20	20	+0.030/+0.091	2700N	18900N	159
LIN-01G-25	25	+0.030/+0.091	4350N	30650N	343
LIN-01G-30	30	+0.040/+0.110	6120N	42840N	450
LIN-01G-40	40	+0.040/+0.115	9600N	67200N	1021
LIN-01G-50	50	+0.040/+0.130	15000N	105000N	1871