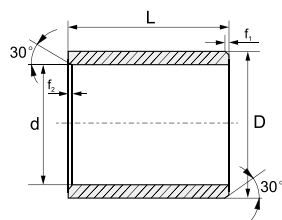


+

## EP 系列规格表 EP Series Specification Table

### 直套 Metric Cylindrical Bushes



推荐安装公差 Recommend fitting tolerance

座孔 Housing: H7

轴 Shaft: H9

EP-0608-06

材料 Material	d	D	L
-------------	---	---	---

d	f <sub>1</sub>	f <sub>2</sub>
d ≤ 10	0.5	0.5
10 < d ≤ 30	0.8	0.5
30 < d	1.2	0.5

直套系列尺寸规格表（各不同材料尺寸表通用）

型号 model	内径 d	压装座孔内径 d 公差	外径 D	高度 L
EP-0304-03	3	+0.014/+0.054	4.5	3
EP-0304-06	3	+0.014/+0.054	4.5	6
EP-0305-05	3	+0.014/+0.054	5.5	5
EP-0405-06	4	+0.020/+0.068	5.5	6
EP-0406-06	4	+0.020/+0.068	6	6
EP-0507-05	5	+0.020/+0.068	7	5
EP-0507-08	5	+0.020/+0.068	7	8
EP-0507-10	5	+0.020/+0.068	7	10
EP-0507-18	5	+0.020/+0.068	7	18
EP-0608-04	6	+0.020/+0.068	8	4
EP-0608-06	6	+0.020/+0.068	8	6
EP-0608-08	6	+0.020/+0.068	8	8
EP-0608-10	6	+0.020/+0.068	8	10
EP-0608-11	6	+0.020/+0.068	8	11
EP-0810-05	8	+0.025/+0.083	10	5
EP-0810-06	8	+0.025/+0.083	10	6
EP-0810-08	8	+0.025/+0.083	10	8
EP-0810-10	8	+0.025/+0.083	10	10
EP-0810-11	8	+0.025/+0.083	10	11
EP-0810-12	8	+0.025/+0.083	10	12
EP-0810-15	8	+0.025/+0.083	10	15
EP-0811-10	8	+0.025/+0.083	11	10
EP-0812-10	8	+0.025/+0.083	12	10
EP-0911-06	9	+0.025/+0.083	11	6
EP-1012-04	10	+0.025/+0.083	12	4
EP-1012-05	10	+0.025/+0.083	12	5
EP-1012-06	10	+0.025/+0.083	12	6
EP-1012-08	10	+0.025/+0.083	12	8
EP-1012-10	10	+0.025/+0.083	12	10
EP-1012-12	10	+0.025/+0.083	12	12
EP-1012-15	10	+0.025/+0.083	12	15
EP-1014-10	10	+0.013/+0.071	14	10
EP-1014-16	10	+0.025/+0.083	14	16
EP-1012-18	10	+0.025/+0.083	12	18
EP-1012-20	10	+0.025/+0.083	12	20
EP-1214-06	12	+0.032/+0.102	14	6
EP-1214-08	12	+0.032/+0.102	14	8
EP-1214-10	12	+0.032/+0.102	14	10
EP-1214-12	12	+0.032/+0.102	14	12
EP-1214-15	12	+0.032/+0.102	14	15
EP-1214-20	12	+0.032/+0.102	14	20

直套系列尺寸规格表（各不同材料尺寸表通用）

型号 model	内径 d	压装座孔内径 d 公差	外径 D	高度 L
EP-1820-20	18	+0.032/+0.102	20	20
EP-1820-25	18	+0.032/+0.102	20	25
EP-2022-12	20	+0.040/+0.124	22	12
EP-2022-15	20	+0.040/+0.124	22	15
EP-2022-28	20	+0.040/+0.124	22	28
EP-2023-10	20	+0.040/+0.124	23	10
EP-2023-15	20	+0.040/+0.124	23	15
EP-2023-20	20	+0.040/+0.124	23	20
EP-2023-23	20	+0.040/+0.124	23	23
EP-2023-25	20	+0.040/+0.124	23	25
EP-2023-30	20	+0.040/+0.124	23	30
EP-2025-15S	20	+0.020/+0.104	25	15
EP-2125-32	21	+0.040/+0.124	25	32
EP-2225-15	22	+0.040/+0.124	25	15
EP-2225-20	22	+0.040/+0.124	25	20
EP-2225-25	22	+0.040/+0.124	25	25
EP-2225-30	22	+0.040/+0.124	25	30
EP-2528-10	25	+0.040/+0.124	28	10
EP-2528-12	25	+0.040/+0.124	28	12
EP-2528-15	25	+0.040/+0.124	28	15
EP-2528-20	25	+0.040/+0.124	28	20
EP-2528-25	25	+0.040/+0.124	28	25
EP-2528-30	25	+0.040/+0.124	28	30
EP-2529-25	25	+0.040/+0.124	29	25
EP-2530-25S	25	+0.020/+0.104	30	25
EP-2832-20	28	+0.040/+0.124	32	20
EP-2832-25	28	+0.040/+0.124	32	25
EP-2832-30	28	+0.040/+0.124	32	30
EP-3034-20	30	+0.040/+0.124	34	20
EP-3034-25	30	+0.040/+0.124	34	25
EP-3034-30	30	+0.040/+0.124	34	30
EP-3034-40	32	+0.040/+0.124	34	40
EP_3236-20	32	+0.050/+0.150	36	20
EP-3236-23	32	+0.050/+0.150	36	23
EP-3236-25	32	+0.050/+0.150	36	25
EP-3236-30	32	+0.050/+0.150	36	30
EP-3236-40	32	+0.050/+0.150	36	40
EP-3539-15	35	+0.050/+0.150	39	15
EP-3539-20	35	+0.050/+0.150	39	20
EP-3539-25	35	+0.050/+0.150	39	25
EP-3539-30	35	+0.050/+0.150	39	30



## EP 系列规格表 EP Series Specification Table

直套系列尺寸规格表 (各不同材料尺寸表通用)

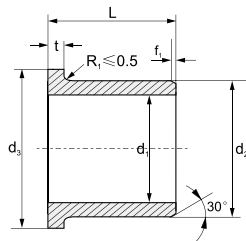
EP-1214-25	12	+0.032/+0.102	14	25
EP-1215-20	12	+0.032/+0.102	15	20
EP-1315-07	13	+0.032/+0.102	15	7
EP-1315-10	13	+0.032/+0.102	15	10
EP-1416-08	14	+0.032/+0.102	16	8
EP-1416-10	14	+0.032/+0.102	16	10
EP-1416-15	14	+0.032/+0.102	16	15
EP-1416-20	14	+0.032/+0.102	16	20
EP-1416-25	14	+0.032/+0.102	16	25
EP-1517-10	15	+0.032/+0.102	17	10
EP-1517-15	15	+0.032/+0.102	17	15
EP-1517-17	15	+0.032/+0.102	17	17
EP-1517-20	15	+0.032/+0.102	17	20
EP-1517-25	15	+0.032/+0.102	17	25
EP-1618-10	16	+0.032/+0.102	18	10
EP-1618-12	16	+0.032/+0.102	18	12
EP-1618-15	16	+0.032/+0.102	18	15
EP-1618-20	16	+0.032/+0.102	18	20
EP-1616-25	16	+0.032/+0.102	18	25
EP-1620-16S	16	+0.016/+0.086	20	16
EP-1820-15	18	+0.032/+0.102	20	15

直套系列尺寸规格表 (各不同材料尺寸表通用)

EP-3539-40	35	+0.050/+0.150	39	40
EP-359-50	35	+0.050/+0.150	39	50
EP-4044-20	40	+0.050/+0.150	44	20
EP-4044-30	40	+0.050/+0.150	44	30
EP-4044-40	40	+0.050/+0.150	44	40
EP-4044-50	40	+0.050/+0.150	44	50
EP-4550-30	45	+0.050/+0.150	50	30
EP-4550-40	45	+0.025/+0.125	50	40
EP-4550-50	45	+0.050/+0.150	50	50
EP-5055-20	50	+0.050/+0.150	55	20
EP-5055-30	50	+0.050/+0.150	55	30
EP-5055-40	50	+0.050/+0.150	55	40
EP-5055-50	50	+0.050/+0.150	55	50
EP-8590-40	85	+0.036/+0.176	90	40

\*d公差为压入标准 H7 座孔 (符合 ISO3547-1) 后公差  
\*Tolerance d:after being pressed into housing H7(ISO3547-1)

## 翻边轴套 Metric F flange Bushes



推荐安装公差 Recommend fitting tolerance

座孔 Housing: H7

轴 Shaft: H9

订购编码 Order P/N:

EP F -0608 -06



材料 Material

d	f <sub>1</sub>
d≤10	0.5
10 < d≤30	0.8
30 < d	1.2

直套系列尺寸规格表 (各不同材料尺寸表通用)

型号	内径 d1	压装座孔内径 d 公差	外径 d2	法兰外径 d3	高度 L	法兰厚度 e1
EPF-0304-03	3	+0.014/+0.054	4.5	7.5	3	0.75
EPF-0304-05	3	+0.014/+0.054	4.5	7.5	5	0.75
EPF-0507-04	5	+0.020/+0.068	7	11	4	1
EPF-0507-05	5	+0.020/+0.068	7	11	5	1
EPF-0608-04	6	+0.020/+0.068	8	12	4	1
EPF-0608-06	6	+0.020/+0.068	8	12	6	1
EPF-0608-08	6	+0.020/+0.068	8	12	8	1
EPF-0608-10	6	+0.020/+0.068	8	12	10	1
EPF-0810-05	8	+0.025/+0.083	10	15	5	1
EPF-0810-07	8	+0.025/+0.083	10	15	7	1
EPF-0810-09	8	+0.025/+0.083	10	15	9	1
EPF-0810-10	8	+0.025/+0.083	10	15	10	1
EPF-081014-12	8	+0.025/+0.083	10	14	12	1
EPF-0810-12	8	+0.025/+0.083	10	15	12	1
EPF-0810-13	8	+0.025/+0.083	10	18	13	1
EPF-081017-13	8	+0.025/+0.083	10	17	15	1
EPF-081216-10	8	+0.013/+0.071	12	16	10	2
EPF-1012-05	10	+0.025/+0.083	12	18	5	1
EPF-1012-06	10	+0.025/+0.083	12	18	6	1
EPF-1012-07	10	+0.025/+0.083	12	18	7	1
EPF-1012-08	10	+0.025/+0.083	12	18	8	1
EPF_1012-09	10	+0.025/+0.083	12	18	9	1

直套系列尺寸规格表 (各不同材料尺寸表通用)

型号	内径 d1	压装座孔内径 d 公差	外径 d2	法兰外径 d3	高度 L	法兰厚度 e1
EPF-1517-17	15	+0.032/+0.102	17	23	17	1
EPF-1517-20	15	+0.032/+0.102	17	23	20	1
EPF-1518-12	15	+0.032/+0.102	18	23	12	1
EPF-1517-25	15	+0.032/+0.102	1	23	25	1
EPF-1618-12	16	+0.032/+0.102	18	24	12	1
EPF-1618-17	16	+0.032/+0.102	18	24	17	1
EPF-161822-22	16	+0.016/+0.086	18	22	22	2
EPF-162024-16	16	+0.016/+0.086	20	24	16	2
EPF-162024-22	16	+0.016/+0.086	20	24	22	2
EPF-1820-12	18	+0.032/+0.102	20	26	12	1
EPF-1820-17	18	+0.032/+0.102	20	26	17	1
EPF-1820-20	18	+0.032/+0.102	20	26	20	1
EPF-182024-22	18	+0.016/+0.086	20	24	22	2
EPF-2022-15	20	+0.040/+0.124	23	25	15	1
EPF-2023-11	20	+0.040/+0.124	23	30	11	1.5
EPF-2023-11.5	20	+0.040/+0.124	23	30	11.5	1.5
EPF-2023-16	20	+0.040/+0.124	23	30	16	1.5
EPF-2023-16.5	20	+0.040/+0.124	23	30	16.5	1.5
EPF-2023-21.5	20	+0.040/+0.124	23	30	21.5	1.5
EPF-2023-25	20	+0.040/+0.124	23	30	25	1.5
EPF-202330-15	20	+0.040/+0.124	23	30	15	2
EPF-202330-22	20	+0.040/+0.124	23	30	22	2

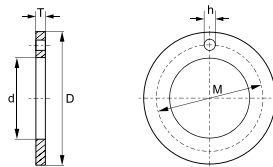


## EP 系列规格表 EP Series Specification Table

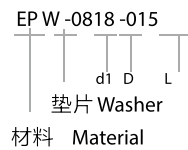
翻边系列尺寸规格表 (各不同材料尺寸表通用)						
型号	内径 d1	压装座孔内径 d 公差	外径 d2	法兰外径 d3	高度 L	法兰厚度 e1
EPF-1012-10	10	+0.025/+0.083	12	18	10	1
EPF-1012-12	10	+0.025/+0.083	12	18	12	1
EPF-1012-15	10	+0.025/+0.083	12	18	15	1
EPF-1012-17	10	+0.025/+0.083	12	18	17	1
EPF-101216-12	10	+0.013/+0.071	12	16	12	2
EPF-1214-04	12	+0.032/+0.102	14	20	4	1
EPF-1214-05	12	+0.032/+0.102	14	20	5	1
EPF-1214-06	12	+0.032/+0.102	14	20	6	1
EPF-1214-07	12	+0.032/+0.102	14	20	7	1
EPF-1214-09	12	+0.032/+0.102	14	20	9	1
EPF-1214-10	12	+0.032/+0.102	14	20	10	1
EPF-1214-12	12	+0.032/+0.102	14	20	12	1
EPF-1214-13	12	+0.032/+0.102	14	20	13	1
EPF-1214-15	12	+0.032/+0.102	14	20	15	1
EPF-1214-17	12	+0.032/+0.102	14	20	17	1
EPF-1214-18	12	+0.032/+0.102	14	20	18	1
EPF-1012-20	12	+0.032/+0.102	14	20	20	1
EPF-121417-04	12	+0.032/+0.102	14	17	4	1
EPF-121417-05	12	+0.032/+0.102	14	17	5	1
EPF-121417-12	12	+0.016/+0.086	14	18	12	2
EPF-121417-25	12	+0.032/+0.102	14	18	25	1
EPF-121417-40	12	+0.016/+0.086	14	18	40	2
EPF-121417-10	12	+0.016/+0.086	16	20	10	2
EPF-1416-052	14	+0.032/+0.102	16	22	5.2	1
EPF-1416-08	14	+0.032/+0.102	16	22	8	1
EPF-1416-10	14	+0.032/+0.102	16	22	10	1
EPF-1416-12	14	+0.032/+0.102	16	22	12	1
EPF-1416-17	14	+0.032/+0.102	16	22	17	1
EPF-141620-06	14	+0.016/+0.086	16	20	6	2
EPF-141620-15	14	+0.016/+0.086	16	20	15	2
EPF-151720-05	15	+0.032/+0.102	17	20	5	1
EPF-1517-09	15	+0.032/+0.102	17	23	9	1
EPF-1517-12	15	+0.032/+0.102	17	23	12	1
EPF-151720-12	15	+0.032/+0.102	17	20	12	1

翻边系列尺寸规格表 (各不同材料尺寸表通用)						
型号	内径 d1	压装座孔内径 d 公差	外径 d2	法兰外径 d3	高度 L	法兰厚度 e1
EPF-202430-20	20	+0.020/+0.104	24	30	20	2
EPF-202530-15	20	+0.020/+0.104	25	30	15	2
EPF-202732-20	20	+0.020/+0.104	27	32	20	2
EPF-2225-11.5	22	+0.040/+0.124	25	32	11.5	1.5
EPF-2528-11	25	+0.040/+0.124	28	35	11	1.5
EPF-2528-11.5	25	+0.040/+0.124	28	35	11.5	1.5
EPF-2528-16	25	+0.040/+0.124	28	35	16	1.5
EPF-2528-16.5	25	+0.040/+0.124	28	35	16.5	1.5
EPF-2528-21	25	+0.040/+0.124	28	35	21	1.5
EPF-252835-32	25	+0.020/+0.104	28	35	32	2
EPF-3034-16	30	+0.040/+0.124	34	42	16	2
EPF-3034-26	30	+0.040/+0.124	34	42	26	2
EPF-3034-37	30	+0.040/+0.124	34	42	37	2
EPF-3034-32	30	+0.040/+0.124	34	42	32	2
EPF-303445-18	30	+0.020/+0.104	34	42	18	2
EPF-303445-22	30	+0.020/+0.104	34	45	22	2
EPF-303445-32	30	+0.040/+0.124	34	45	32	2
EPF-3236-16	32	+0.050/+0.150	36	40	16	2
EPF-3236-26	32	+0.050/+0.150	36	40	26	2
EPF-3539-16	35	+0.050/+0.150	39	47	16	2
EPF-3539-26	35	+0.050/+0.150	39	47	26	2
EPF-353950-22	35	+0.025/+0.125	39	50	22	2
EPF-4044-30	40	+0.050/+0.150	44	52	30	2
EPF-4044-40	40	+0.050/+0.150	44	52	40	2
EPF-4550-50	45	+0.050/+0.150	50	58	50	2
EPF-455060-45	45	+0.025/+0.125	50	60	45	2.5
EPF-5055-20	50	+0.050/+0.150	55	63	20	2
EPF-5055-30	50	+0.050/+0.150	55	63	30	2
EPF-5055-40	50	+0.050/+0.150	55	63	40	2
EPF-5055-50	50	+0.050/+0.150	55	63	50	2
EPF-505563-50	50	+0.025/+0.125	55	63	50	2
EPF-657080-60	65	+0.030/+0.150	70	80	60	2.5
EPF-9095110-50	90	+0.036/+0.176	95	110	50	2.5

## 垫片 Metric Thrust Washer



订购编码 Order P/N:



垫片系列尺寸规格表 (各不同材料尺寸表通用)					
型号	内径 d	外径 d	厚度 T	定位孔圆心直径	定位孔直径
EPW-0815-005	8	15	0.5		
EPW-0818-015	8	18	1.5		1.5
EPW-1018-015	10	18	1.5	13	1.5
EPW-1224-015	12	24	1.5	18	1.5
EPW-1426-015	14	26	1.5	20	2
EPW-1630-015	16	30	1.5	23	2
EPW-1832-015	18	32	1.5	25	2
EPW-2030-015	20	30	1.5		

垫片系列尺寸规格表 (各不同材料尺寸表通用)					
型号	内径 d	外径 d	厚度 T	定位孔圆心直径	定位孔直径
EPW-2036-015	20	36	1.5	38	3
EPW-2238-015	22	38	1.5	30	3
EPW-2442-015	24	42	1.5	33	3
EPW-2644-015	26	44	1.5		
EPW-2644-015	26	44	1.5	35	3
EPW-2848-015	28	48	1.5	38	4
EPW-3254-015	32	54	1.5	43	4
EPW-3254-015	32	54	1.5		
EPW-4266-015	42	66	1.5	54	4
EPW-4874-020	48	74	2	61	4